



觀塘鴻圖道16號志成工業大廈12樓1205室



3616 6951



<https://sechamber.hk/>



HONG KONG
GENERAL CHAMBER OF
SOCIAL ENTERPRISES
香港社會企業總會
2020-2021

香港社會企業總會 HKGCSSE

目錄

TABLE OF CONTENT

CONTENT 目錄

- 01 關於我們 About Us
- 02 會長的話 Chairman's Message
- 03 組織架構 Organization Structure
- 04 活動回顧 Highlights
 - 「同行抗疫」 Anti-epidemic measures
 - 「社企認證」 SEE Mark
 - 社企發展及支援 SE Development & Support
 - 政策倡議 Policy Advocacy
 - 教育及推廣 Education & Promotion
 - 社企協作 Partnership
 - 國內外交流聯繫 International Collaboration
 - 會員事務 Membership's Affairs
- 05 財務報告 Financial Statement
- 06 會員名單 Member List
- 07 鳴謝 Acknowledgement

關於我們 ABOUT US

香港社會企業總會

本會於2009年成立，為香港社企業界的一個重要平台，本會會員社企及認證社企佔全港社企近5成*。本會積極推動及支援社會企業的發展，擔當政府、商界、學術界、社福界與社企之間的溝通橋樑。

*根據香港社會服務聯會的《社企指南2020/2021》，全港有666間社會企業單位。

HKGCSE was established in 2009 as one of the important platforms of social enterprises. The number of our members accounts for 50% of social enterprises in Hong Kong*.

HKGCSE actively promotes and supports the development of social enterprises, serves as a bridge between social enterprises and the government, business partners, academia and NGOs.

社企總會的願景是致力促進香港社會企業的發展，成為香港社會企業具影響力的協作平台，團結社企。

本會目標 OBJECTIVE

- 1** 推動社會企業運動
To promote social enterprise movement
- 2** 為社會企業發聲
To be the voice of social enterprise
- 3** 擔當社會企業與政府、商界、學術界及社福界的溝通橋樑
To act as the bridge between social enterprises and other sectors including government, corporates, academia and NGOs
- 4** 支援社企、提升其營運能力
To equip social enterprises with professional competencies
- 5** 增加大眾對社會企業的認識和支持
To broaden the public understanding of social enterprises

認真·認可
SEE 社企認證
Social Enterprise
Endorsement Mark

主辦機構 Organizer



會長的話

CHAIRMAN'S MESSAGE



會長的話

CHAIRMAN'S MESSAGE

吳宏增先生

香港社會企業總會會長



2021 年度總結

2021 年疫情未過，對社會企業來說，仍是充滿挑戰的一年。今年年初，社企總會第三次進行社企業務狀況追蹤調查，結果發現社企營運雖依然困難，但大致已適應疫情下的新常態。社聯社會企業商務中心今年的最新名錄，顯示社企總數錄得輕微退減，這實在仍叫人欣慰，反映疫情對社企影響相對輕微。除卻進行調查，透過新聞發布會向政府及大眾反映社企經營上的挑戰，總會亦於 8 月舉辦記者招待會，報道個別社企在疫情下成功轉型，奮發求進的積極例子，希望讓社會大眾知道，社企與其他商企一樣，亦可以轉危為機，繼續朝着他們的社會目標奮進。

今年年中開始，總會得到民政事務局資助，開展一系列名為 CB360 的社會企業能力提升的培訓計劃。計劃主要包括三部份：我們邀請在各個領域具有豐富經驗的培訓導師及社企業界領導者主持專題工作坊外，亦進行多個社企探訪，此外亦進行一對一的「步步為盈」社企教練同行計劃。在疫情底下，工作坊的現場出席率受到一定影響，但個別工作坊的在線參加者仍錄得可觀的數字。CB 360 計劃是一項為期兩年的能力建設項目，建基於今年的經驗，我們期望明年的計劃將會吸引更多社企經營者，或有志開拓社企的人士參與。

為改善社企業界的經營環境，並向政府部門反映社企所面對的困難，總會今年除多次去函各公營部門，包括醫管局及康文署，為社企爭取租金減免，亦與社會福利署市場辦事處舉行視像會議，反映個別社企在申請「創業展才能計劃」基金方面所面對的困難，亦與夥伴倡自強委員會主席黃光耀先生作非正式會面，了解社企申請相關資助的成功率，並希望為未能成功獲得資助的社企提供支援。

社企總會的旗艦項目社企認證過去一年仍穩步拓展，今年內，共有 10 間社企申請延續認證，亦有 6 個項目初次申請成為認證社企。數字顯示，越來越多非社會福利機構背景的社企申請認證，反映認證對這類初創社企獲得社會認同方面，價值受到肯定。

社企總會雖然並非在稅務條例 88 底下登記的慈善組織，但亦積極透過夥伴機構 SIC 嘗試申請各類與社企相關的公益項目。雖然部份項目未能成功申辦，但個別項目的申請初步獲得正面回應。此外總會亦計劃與本港大專院校合作，推展社會企業教育，希望能鼓勵更多年青一代，畢業後投入社會企業的行列。

由於疫情關係，總會仍未能與過去一樣，與外地或國內相關組織進行交流，亦未能舉辦較具規模的業界研討會，但相信在疫情進一步穩定以後，有關項目將會再陸續推行。

本會每年與社企民間高峰會合辦的社企優秀員工嘉許禮，今年將以實體形式復辦。獲獎的社企員工超過 80 位，嘉許禮的形式雖略為簡化，但我們希望實體的活動更能促進社企業界朋友之間的互動，讓獲獎的優秀員工能濟濟一堂，互相勉勵及祝賀。

香港社會企業總會成立至今已 12 年，得到各持份者的支持，尤其是一班對社企充滿熱誠的董事局成員，他們在繁忙的公務之餘，義務參與社企總會的工作，出心出力，對香港社會企業運動的發展作出積極的貢獻，我在此向他們致以衷心感謝。此外，我亦要感謝社企總會各員工，他們在資源緊絀的情況下，努力推行各項工作，對總會的持續運作有着舉足輕重的作用。展望來年，希望疫情進一步穩定，本港、內地以至各國的防疫措施開始放緩，社會企業在經營上，及在各個領域的交流上，均可享有更大的空間，作進一步的拓展。

2021 年度總結

會長的話

CHAIRMAN'S MESSAGE



2021 ANNUAL SUMMARY

The epidemic in 2021 is still a challenging year for social enterprises. At the beginning of this year, the Hong Kong General Chamber of Social Enterprises (GCSE) conducted a third follow-up survey on the status of social enterprises, and found that although the operation of social enterprises is still difficult, it has generally adapted to the new normal under the epidemic. The latest directory of the SOCIAL ENTERPRISE BUSINESS CENTER this year shows that the total number of social enterprises has recorded a slight decline, which is still gratifying, reflecting that the impact of the epidemic on social enterprises is relatively small. In addition to conducting survey and reflecting the challenges of social enterprises to the government and the public through press conferences, GCSE also held a press conference in September to report on the positive examples of individual social enterprises successfully transforming under the epidemic and striving for progress, hoping to let the public know that social enterprises, like other commercial enterprises, can also turn crises into opportunities and continue to strive towards their social goals.

Since the middle of this year, GCSE has received funding from the Home Affairs Bureau to carry out a series of training programmes called CB360 for social enterprises' capacity building. The scheme mainly consists of three parts: we invite trainers and business leaders with extensive experience in various fields to conduct a number of training workshops, social enterprise visits, as well as a one-on-one "Step by Step" Social Enterprise Coaching Programme. Under the pandemic, on-site workshop attendance has been affected to some extent, but online participants in individual workshops still recorded considerable numbers. The C B 360 program is a two-year capacity building project, and based on this years' experience, we expect that next year's plan will attract more social enterprise operators or those who aspire to develop social enterprises to take part in the scheme.

To improve the business environment of the social enterprise community and to reflect to the government on the difficulties faced by social enterprises, GCSE not only wrote to various public organizations and government departments, including the Hospital Authority and the LCSD, to seek rent relief for social enterprises this year, but also held a video conference with the Marketing Office of the Social Welfare Department to reflect the difficulties faced by individual social enterprises in applying for the 3E Fund, and also held informal meetings with Mr. Wong Kong Yiu, Chairman of the Enhancing Self-Reliance Through District Partnership Programme, to understand the success rate of social enterprises in applying for their grants, and hoped to provide support to social enterprises that failed to successfully obtain funding.

The Social Enterprise Endorsement Mark (SEE Mark), the flagship project of GCSE, has been steadily developing in the past years, and this year, a total of 10 social enterprises have applied for renewal of certification, and 6 projects have applied for certification for the first time. The figures show that more and more social enterprises from non-social welfare institution backgrounds are applying for certification, reflecting the recognition of the value of certification in terms of social recognition of such start-up social enterprises.

Although GCSE is not a charitable organization registered under the Inland Revenue Ordinance (IRO 88), we actively attempt to apply for various public welfare projects related to social enterprise through its partner organisations SIC. Although some projects were unsuccessfully applied for, the applications for individual projects initially received positive responses. In addition, GCSE also plans to cooperate with Hong Kong's tertiary institutions to promote social enterprise education, hoping to encourage more young people to join the social enterprises after graduation. Due to the epidemic situation, GCSE has still not been able to have exchanges with relevant organizations in other places or in China as in the past, nor has it been able to hold large-scale sector-wide seminars, but it is believed that after the further stabilization of the epidemic, the relevant projects will be implemented one after another.

The Recognition Ceremony for outstanding employees of social enterprises, which is jointly organized by GCSE with the Social Enterprises Summit every year, will be resumed as onsite programme this year. Although the categorization of the award-winning social enterprise employees is slightly simplified, we hope that the face to face event can promote the interaction between friends in the social enterprise community, so that the outstanding employees who have won the award can gather together, encourage and congratulate each other.

GCSE has been established for 12 years, and I would like to express my heartfelt thanks to the support of various stakeholders, especially our council members who are enthusiastic about social enterprises, who have volunteered to participate in the work of GCSE in addition to their busy official duties, and have made positive contributions to the development of the social enterprise movement in Hong Kong. In addition, I would like to thank the staff of GCSE for their efforts to carry out various tasks under the condition of tight resources, and their contribution to the continuous operation of the chamber is very important. Looking forward to the coming year, it is hoped that the epidemic will further stabilize, the epidemic prevention measures in Hong Kong, the Mainland and even other countries will begin to be relaxed, and social enterprises can enjoy greater space for further expansion in terms of operation and exchanges in various fields.



理事會成員 COUNCIL MEMBERS

香港社會企業總會



鍾偉成先生

Mr. Chung Wai Shing
Vice Chairman (External)



梁少玲女士

Ms. Leung Siu Ling, Ivy
Honorary Secretary



高碧姬女士

Ms. Ko Pik Kei, Peggy
Treasurer Secretary

吳宏增先生

Mr. Ng Wang Tsang, Andy
Chairman



姚鴻志先生

Mr. Yiu Hung Chi
Vice Chairman (Internal)



黃素娟女士

Ms. Wong So Kuen, Kris
Honorary Secretary



沃馮熾琮女士

Mrs. Yuk Fung Yin King, Helina
Council Member



李淑慧女士

Ms. Lee Shuk Wai, Anthea
Council Member



馬錦華先生

Mr. Ma Kam Wah, Timothy
Council Member



李玉芝女士

Ms. Lee Yuk Chi, Josephine
Council Member

郁德芬博士

Dr. Yuk Tak Fun, Alice
Council Member



魏文富先生

Mr. Ngai Man Fu, Simon
Council Member

理事會成員 COUNCIL MEMBERS

香港社會企業總會



翁文智女士

Ms. Ong Man Chi, Fanny
Council Member

吳淑玲女士

Ms. Ng Suk Ling, Angel
Council Member



趙立基先生

Mr. Chiu Lap Kee, Jimmy
Council Member

葉永歡女士

Ms. Yip Wing Foon
Council Member



名譽顧問 HONORARY ADVISORS

香港社會企業總會

溫麗友女士, BBS, JP

Ms. Wan Lai Yau, Deborah, BBS, JP
Honorary Advisor

陳肖齡女士, BBS

Ms. Chan Chiu Ling, Ophelia, BBS
Honorary Advisor

吳秋全先生

Mr. Ng Chau Chuen, Charles
Honorary Advisor

黃元山先生

Mr. Wong Yue Shan, Stephen
Honorary Advisor

許宗盛 先生, SBS, MH, JP

Mr. Hui Chung Shing, Herman, SBS, MH, JP
Honorary Legal Advisor



”

回顧 2021 年,社企總會積極舉辦各類型的活動予會員參與,同時不遺餘力推動社企的發展。

過去一年間,本會舉辦了 13 場工作坊,探訪了 6 間會員社企,更接受近 5 間傳媒的訪問。本會希望連結社會各方的資源、促進社企與各相關持份者的協作、互助、共享,倡導落實促進社企發展的政策,營造一個有利於社企發展的蓬勃生態,讓社會企業最終成為政府、私人企業及慈善組織以外,足以改變社會的一股新興力量,為處理社會問題提供具創意、創新、效益、平等及公義的策略與方案。

TIMELINE 2021 活動回顧

一月

新冠疫情下社企業界營運狀況調查 (第三輪) 新聞發佈會
英國文化協會香港社企研究報告

二月

無線新聞台「時事多面睇」訪問
退修會

三月

社企一分鐘: FOODSPORT
社企一分鐘: Hello Cocoa

四月

「創業展才能」計劃會議
無線電視台「無耆不有」訪問

五月

社企一分鐘: Growth Something
SE Chatroom: wePaint 菁然

六月

CB360計劃展開
社企探訪: TI Farm

七月

enJOY's 30 開幕禮
鳳凰衛視「香港新視點」訪問

八月

enJOY's 30 放映會
「迎難奮進、轉危為機」社企座談會暨傳媒招待會

九月

社企探訪: V cycle
無線電視台「新聞透視」訪問

十月

星島日報「社企認證」訪問
香港電台「同行同行」訪問

十一月

社企探訪: 睿程

十二月

社企探訪: 滾動的書
香港社企員工嘉許計劃2021



活動回顧 HIGHLIGHTS

新聞發佈會 PRESS CONFERENCES

本會分別於 2021 年 1 月 28 日及 2021 年 8 月 31 日舉行新聞發佈會，就新型冠狀病毒第四波疫情影響下社企營運的情況發佈調查結果，並邀請業內人士分享疫情下社企面對的危與機，向政府及各持份者提出具體建議，包括延續政府部門及公營機構處所的社企租戶的租金寬免安排，為期半年。有關建議獲政府接納，成功提供持續性的支援，減輕社企負擔。



GCSE held press conferences on the impact of COVID-19 on the business of social enterprises in January and August this year. The Chamber invited practitioners to share their insights on the challenges and opportunities ahead in face of the pandemic.

GCSE put forward a number of suggestions to urge for government support to tide over the operational crisis caused by the virus.

活動回顧 HIGHLIGHTS



活動回顧 HIGHLIGHTS

「社企認證」網頁完善 SEE MARK

「社企認證」是香港首個為社企而設的認證制度，是一套專業、客觀、全面性的評審系統。這系統旨在幫助社企認清不足之處，針對性地改善其營運能力，同時增加社企營運的透明度，加深大眾及潛在投資者對社企的認識和支持。截至 2021 年，累計 225 個社企項目已獲認證。為提升會員的使用感，本會於今年進行 SEE MARK 網站優化，增設自動存檔、用戶體驗優化等功能。

SEE Mark is the first accreditation system for social enterprises in Hong Kong, which is a professional, objective and comprehensive assessment system. It aims to uplift the social enterprises and improve the level of public confidence. Until 2021, there are totally 225 cumulative accredited social enterprises. The Chamber has revamped the website to optimise user experience, i.e. auto save function.

社企發展及支援 SE SUPPORT

為促進社企的發展，本會舉辦了不同類型的活動，建立一個讓會員互相扶持的平台，支持會員所需。

In order to promote the development of social enterprises, HKGCSE organised different type of activities to establish a platform for members to support each other and support members' needs.




活動回顧 HIGHLIGHTS

社企營運能力提升計劃 CB360

為了提升社企的營運能力，本會獲民政事務局支持，舉辦為期兩年的社企營運能力提升計劃 (CB360)，多角度發掘社企的疑難雜症，多方面著手解決各種疑慮，幫助社企會員增值。




Hong Kong General Chamber of Social Enterprises (HKGCSE) organizes Capacity Building 360° Scheme 2021 which is sponsored by Home Affairs Bureau HKSAR. The Scheme provides all-rounded solution to fulfill the capacity building and enhancement needs of Social Enterprises at different stages of their development, to introduce and strengthen both concept and management capacities of the social enterprises.

本會自今年 6 月起共舉辦了 13 場工作坊，並透過多個渠道進行宣傳。結果，88.9% 的工作坊有超過 20 位參加者，反應熱烈。

Starting from June, the Chamber promoted the Capacity Building Scheme through different platforms and organised 13 workshops. 88.9% of workshops had over 20 participants. The feedback is positive.



活動回顧 HIGHLIGHTS

香港社企員工嘉許計劃 2021

員工為社企長遠發展的寶貴資產，香港社企員工嘉許計劃 2021 旨在表揚員工的優秀表現及肯定他們對社企的貢獻。因疫情緩和，本年度的嘉許禮在城景國際酒店舉行，並設立多種獎項，鼓勵社企員工繼續緊守崗位，貢獻社會。

**HONG KONG
SOCIAL
ENTERPRISE
EMPLOYEE RECOGNITION
SCHEME 2021**

Hong Kong Social Enterprise Employee Recognition Scheme 2021

Employees are valuable assets for the long-term development of social enterprises. Hong Kong Social Enterprise Employee Recognition Scheme 2021 aims to recognize their outstanding performance and affirm their contributions to social enterprises. The ceremony of this year was held at the Cityview. Various awards were presented to employees to encourage them to continue contributing to their social enterprise and the society.

往年回顧

本會於 2014 年開始舉辦「香港社企員工嘉許計劃」，為本會年度的一項主要活動，計劃的獲獎人數按年增加，去年便有 110 位社企員工獲獎。

The Chamber started to organize the award scheme in 2014. The number of awardees has been increasing year-by-year. Last year, 110 social enterprise employees received awards.



活動回顧 HIGHLIGHTS

社企探訪 SE VISIT

本會定期舉辦社企探訪活動予業界及有興趣開立社企之人士參與，讓參加者走入社企，認識社企的日常運作，了解社企的營運知識和技巧。

HKGCSE organized visits to social enterprises for the practitioners in the sectors, and those who are interested in setting up social enterprises. Through the visits, participants understand the knowledge and daily operation skills of social enterprises.



六月 / TI Farm

天愛坊室內種植場 (TI FARM) 為香港善導會轄下由精神復元人士主理，利用水耕技術運作的社會企業。透過不同種類農作物的培植工作，讓精神復元人士再次投入社會。

九月 / V cycle

V cycle 透過回收和再利用循環再造資源，創造一個有益於環境和可持續發展的社會，同時通過減塑的方法改變市民的消費習慣，推動綠色生活。



十一月 / 睿程

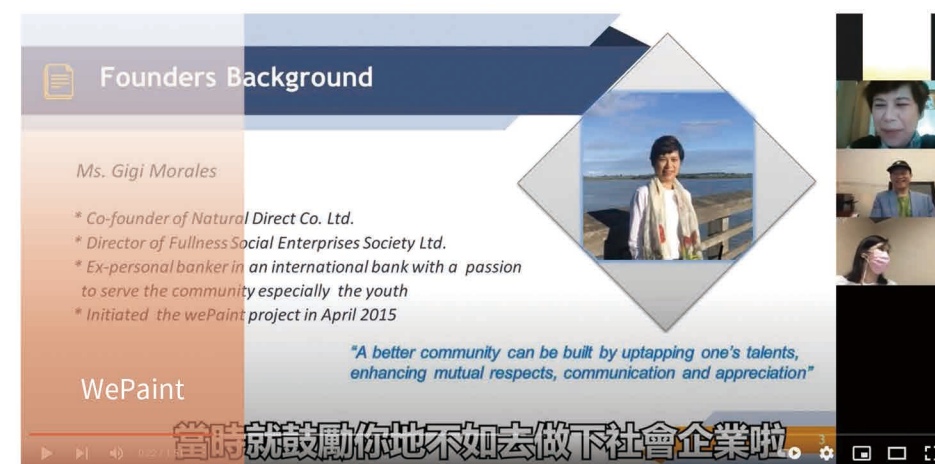
睿程由擁有 30 多年製衣業經驗的姜葛蘭琴女士與女兒姜美而創立，是本地時裝品牌，更是一家香港社企小型製衣廠，聘用弱勢社群及中年婦女就業。

活動回顧 HIGHLIGHTS

社企 Chatroom SE Chatroom

在疫情的影響下未能舉辦實體聯誼活動，本會仍積極為會員提供交流平台。SE Chatroom 是一個在疫情下誕生的活動，旨在為會員提供聯誼機會，在困境下互相支援和分享資源，促進跨社企合作。

Although physical networking events could not be held under COVID-19, HKGCSE actively provided members a platform for exchange. SE Chatroom was an event born under the epidemic, which aims at offering networking opportunities, mutual supports and exchange of resources. It fosters cross-social enterprise cooperation.



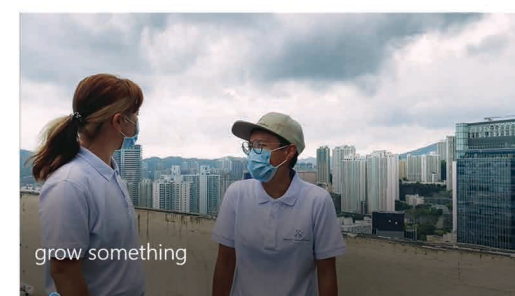
本會於 5 月份邀請 WePaint，分享了社企最近兩年的苦與樂、最難忘的事以及對將來的願景。

社企一分鐘 SE One Minute

本會邀請了多間社企參與社企一分鐘拍攝，介紹社企的成立目的，向公眾宣傳本地社企。



FOODSPORT

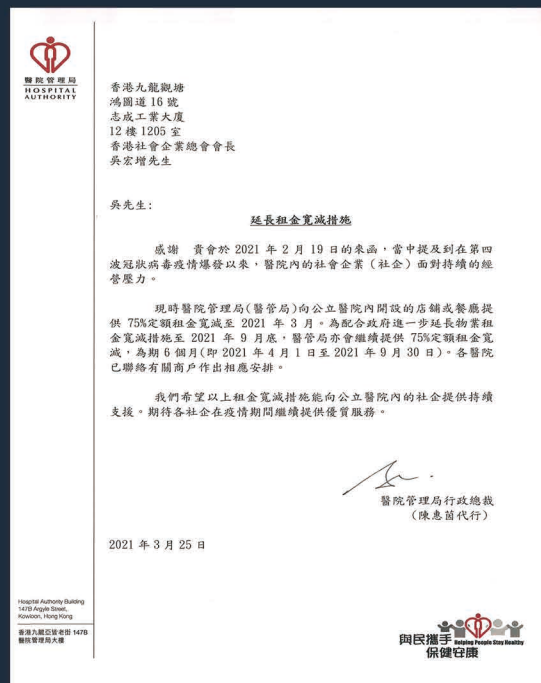


GROW SOMETHING



HELLO COCOA

活動回顧 HIGHLIGHTS 政策倡議 POLICY ADVOCACY



本會於2021年度財政預算案公佈後，即時向醫管局致函描述醫院內社會企業於疫情期間所面對的經營困難，並提出「延長醫院內社企租金寬減措施的期限」。



活動回顧 HIGHLIGHTS 教育及推廣 EDUCATION & PROMOTION

過去一年，本會積極透過不同渠道宣揚社企工作，例如：籌辦暑期實習生計劃、招募公眾人士成為本會社企 Buddies 和社企大使，讓公眾更了解社企的意義。



2021.10.30 香港電台訪問

本會會長吳宏增先生接受訪問，指出在新型肺炎的陰霾之下，社企經營面對前所未有的困難。但大部份社企仍然堅持保住員工，也不會隨便削減人工。



2021.07.26 鳳凰衛視訪問

本會的理事趙立基先生接受鳳凰衛視「香港新視點」訪問，分享疫情下社企面臨的危機，並引用本會1月份的調查結果，指出疫情下有3%的社企結束營業，9%社企暫停營運，但僅有5%的同業現金流可維持最少一年。



2021.04.03 無綫電視訪問

本會外務副會長鍾偉成先生和會員Eldpathy 接受TVB節目「無耆不有」訪問，指出社企在疫情下要兼顧收支平衡和社會使命的難處。鍾先生在節目中提及撰信給財政司司長陳茂波先生，提議撥出5000元電子消費券中的2%作為社企消費券，為社企解困。



2021.09.09 無綫電視訪問

本會會長吳宏增先生和會員睿程接受TVB新聞透視訪問，向大眾反映社企在疫情下面對的挑戰和轉機。

活動回顧 HIGHLIGHTS

社企協作 PARTNERSHIP

本會協辦和參與多項社企及社創項目，除促進本會與伙伴的關係外，更凝聚社會力量及增加大眾對社企的認識。本會亦藉此推介會員予商界、學術界及社福界，推動社企發展。

HKGCSE co-organized and participated a number of social enterprise and social innovation projects. It helped strengthen the relationship between the partners and us. The synergistic partnership certainly benefited social enterprises from gaining stakeholders' support. To promote the development of social enterprises, we also introduced HKGCSE members to corporates, academia, and NGO for exploring collaboration.

社企活動參與 SE ACTIVITIES INVOLVED

社企民間高峰會 SE Summit
 社企民間高峰會觀塘區活動「再享 30」enJOY's 30
 豐盛社企學會「十一良心消費運動 2021」TECM
 香港對談 Hong Kong Dialogue
 社企苗「STEM+ 運動小領袖」Social Seed
 香港中文大學創業研究中心香港社會企業挑戰賽
 Hong Kong Social Enterprise Challenge
 (HKSEC) by Center for Entrepreneurship of
 CUHK



精彩片段 HIGHLIGHTS



會內退修日



「再享 30」閉幕活動



本會於今年年中與民政事務局「伙伴倡自強」社區協作計劃諮詢委員會主席黃光耀先生會面，表達社企在申請「伙伴倡自強」基金方面的關注。



與英國文化協會合辦講座
 “Ways Forward For a Collaborative Social Impact Ecosystem”



支持活動「STEM+ 運動小領袖」及「武貽傳承」啟動禮

Member Services 會員服務

本會為會員定期提供一對一的「個別社企諮詢服務」。這計劃針對特定的社企行業，由該界別的資深營運者直接解答會員的問題或提出建議。本會亦定期出版會員通訊，提供社企業界最新活動的資料，其他會員服務包括：租用場地及廣告燈箱、通訊地址及收信服務、影印及傳真服務。

HKGCSE regularly provides one-to-one social enterprise consulting services for members. Experienced operators in the sector answer members' questions or provide consultation to specific social enterprises. We also publish newsletters on a regular basis to provide the latest information of the sector. Other member services include renting venues and advertising boxes, mailing address and receiving services, photocopying and fax services.

- 定期為社企項目宣傳，增加曝光率
- 優先參與本會活動
- 以優惠價或免費參與本會活動
- 參與本會合作伙伴提供的活動
- 社企職員免費成為本會社企Buddies
- 免費社企營運諮詢
- 擁有選舉投票權(只限基本會員)



Λ
2020-2021

創會會員 FOUNDER MEMBERS

蔡海偉
Mr. Chua Hoi Wai

鍾偉成
Mr. Chung Wai Shing

紀治興
Mr. Kee Chi Hing

劉丹娜
Ms. Lau Dan Nor, Agnes

李玉芝
Ms. Lee Yuk Chi, Josephine

馬錦華, MH, JP
Mr. Ma Kam Wah, Timothy, MH, JP

吳宏增
Mr. Ng Wang Tsang, Andy

翁文智
Ms. Ong Man Chi, Fanny

蘇國安
Mr. So Kwok On, Christopher

楊建霞
Ms. Yeung Kin Ha, Yvonne

姚鴻志
Mr. Yiu Hung Chi

郁德芬, BBS, JP
Dr. Yuk Tak Fun, Alice, BBS, JP

會員事務 MEMBERSHIP' S AFFAIRS

會員數目 NUMBER OF MEMBERS

本會積極連繫各會員，定期到他們的辦公室或店舖拜訪，了解他們的營業狀況、面對的挑戰和機遇。本會亦十分支持會員舉辦的活動，不時出席他們的周年會議及典禮。

HKGCSE is strongly bonded with members by SE visits and active participation in events with an aim to understand operations and identify potential challenges and opportunities of the industry.



明途聯繫
MENTALCARE
香港心理衛生會附屬公司
SUBSIDIARY OF MHAHK

SEE MARK 累計獲社企認證項目店舖：
225 間店舖



共廚家作
—— 自家味道 ——

GCSE 會員：
84 間機構
社企項目店舖：
335 個項目

SEE MARK 現時
獲社企認證項目：
92 個項目



HONG KONG ASSOCIATION OF GERONTOLOGY
香港老年學會



北斗薈萃
Social Work Mission

SEE MARK 累計
獲社企認證項目：
118 個項目



New Life
Psychiatric Rehabilitation Association
新生精神康復會

SEE MARK 現時
獲社企認證項目店舖：
180 間店舖

SEE MARK 非牟利
組織社企所佔比率：
58%



HONG KONG REHABILITATION POWER
香港復康力量

SEE MARK 私人資
本社企所佔比率：
42%



會員類別 CATEGORIES OF MEMBERSHIP

本會的會籍共分為四個類別，詳細資料如下：

機構會員 (基本會員)

機構會員 (附屬會員)

社企 BUDDIES – 對社企有興趣的非在學人士，包括在職人士及退休人士或本會機構會員的社企項目職員。

社企大使 – 大專程度或以上對社企有興趣的全日制或兼讀制學生。

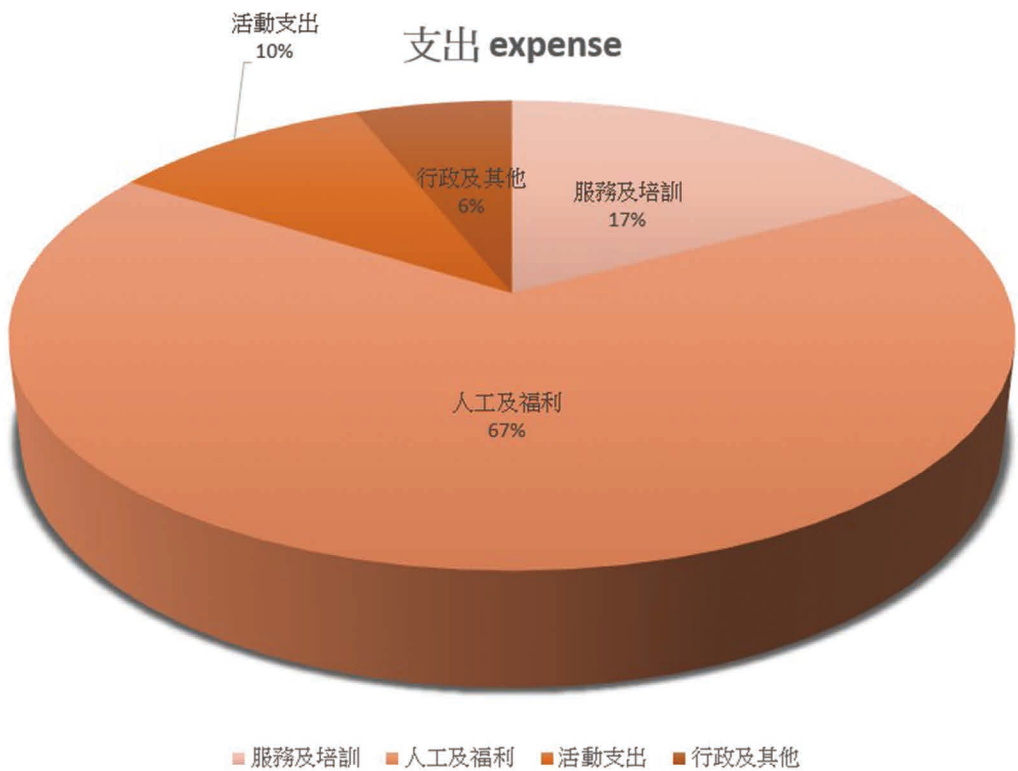
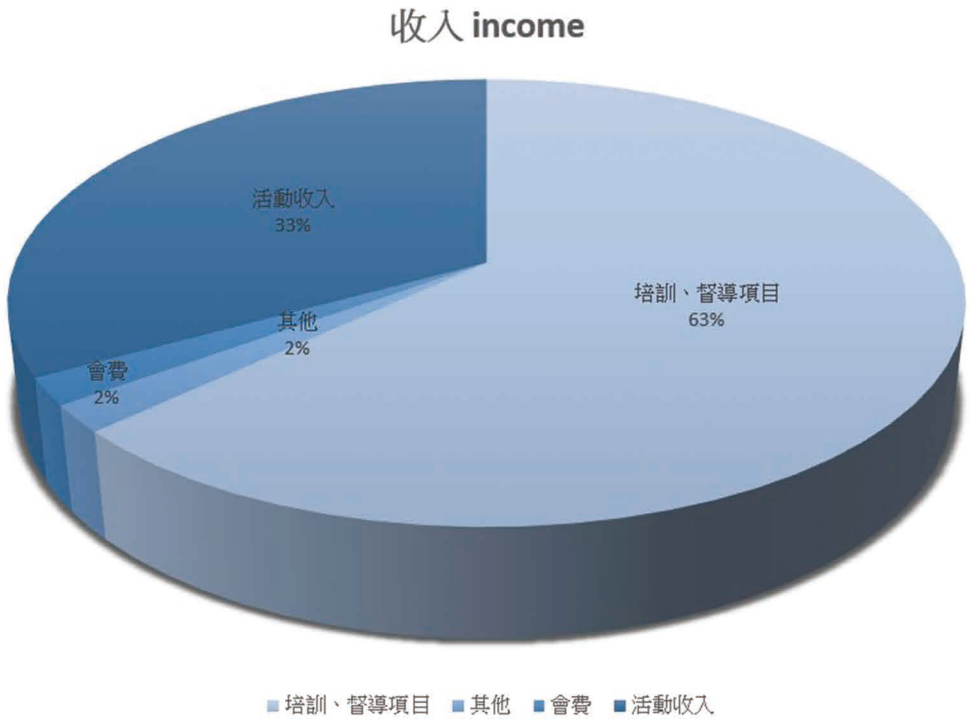
Institutional Member (Full Membership)

Institutional Member (Associate Membership)

SE Buddies – Non-students who are interested in social enterprises, including full time workers, retirees and social enterprise staff of institutional members.

SE Ambassador – College degree or above, full-time and part-time students who are interested in social enterprises.

Financial Statement 財務報告



會員名單 MEMBER LIST 基本會員 Full Member

明朗服務有限公司	活才社會企業有限公司	北斗薈萃
基督教勵行會	香港基督教女青年會	東華三院
基督教家庭服務中心	香港失明人協進會	香港基督教青年會
基督教豐盛職業訓練中心	香港神託會一力加服務有限公司	長者安居協會
香港職業發展服務處	香港基督少年軍	聖雅各福群會
香港復康力量	香港唐氏綜合症協會	香港復康會
香港聖公會麥理浩夫人中心	利民卓業有限公司	香港盲人輔導會
明途聯繫有限公司	浸信會愛壘社會服務處	匡智會社會企業部
新生精神康復會	南葵涌社會服務處	扶康會一康融服務有限公司
科普策略顧問有限公司	和富社會企業	基督教信義會社會服務部
香港聖公會福利協會	聯志發展基金有限公司	社企發展推動基金有限公司
細細佬 家庭保健及復康用品專門店		



會員名單 MEMBER LIST

附屬會員 Associate Member

愛同行
互文教社
歷耆者有限公司
樂在棋中社會企業有限公司
竹園區神召會
香港老年學會
家點綠
籽識教育顧問有限公司
陸續出版有限公司
The Project Futurus
循道衛理中心
V Cylce Company Limited
啟德航空教育有限公司
Edge Development Centre
「細細佬」- 家庭保健及復康用品專門店
阿仙奴足球中心
無狀無名設計事務所
X-ART LIMITED
BRIGHTEN COFFEE LIMITED

魚菜科學園有限公司
沙螺洞綠田園有限公司
寶護理整全綜合服務中心
AMYC AND COMPANY
心繫心生命輔導及教育服務有限公司
皇家牛劍學院(香港)有限公司
微型森林
天糧行膳
體育係
有機農作業
G4One Social Enterprise Limited
滾動的書
我們(第一)製作有限公司
Hello Cocoa
活髮社有限公司
Maceo Solutions
樂啟共融教育有限公司
1Roof 綠綠

輕足適養生(集團)有限公司
共融教室有限公司
動力天使社會企業有限公司
家務幫
瑜樂伽教室有限公司
裳樂匯坊
社企苗
陽光老友記
香港醫護聯盟
思拔中心有限公司
The Fruition Limited
簡約吞嚥餐有限公司
活力50+計劃
Rhys 睿程
Grow Something
Glory Moment Company Limited
獨木不木獨
Day by Day Scrapbook & Papercraft

鳴謝 ACKNOWLEDGEMENT

本會感謝以下單位過去一年的支持*：

香港特別行政區政府民政事務局
香港特別行政區政府勞工及福利局
旭日集團
星展企業及機構銀行
團結香港基金
心光盲人院暨學校
香港職業發展服務處
馬錦華專業管理培訓公司
香港復康力量
經濟通
香港開電視
香港電台
電視廣播有限公司
金鈴化工有限公司
社會企業商務中心
豐盛社企學會
香港中文大學創業研究中心
社企民間高峰會
英國文化協會
退休長者協會有限公司
社職
Centre for Asian Philanthropy and Society
BLW (Business Leaders Who care)
霍耀全先生
周志豪先生

*排名不分先後