



10th • GCSE[®]
ANNIVERSARY

目錄 Table of Content

關於我們 About Us	1
會長的話 Chairman's Message	3
組織架構 Organization Structure	5
活動回顧 Highlights	
1.10周年慶典暨社企研討會 10th anniversary celebration and social enterprise seminar	7
2.「社企認證」 Social Enterprise Endorsement Mark (SEE Mark)	8
3.社企發展及支援 Social Enterprise Development and Support	9
4.政策倡議 Policy Advocacy	12
5.教育及推廣 Education & Promotion	13
6.社企協作 Partnership	14
7.國內外交流聯繫 International Collaboration	15
8.會員事務 Membership's Affairs	17
財務報告 Financial Statement	19
創會會員 Founding Members	20
會員名單 Member List	21
鳴謝 Acknowledgement	23



關於我們 About Us

背景Background

本會於2009年成立，為香港社企業界的一個重要平台，現會員數目約佔全港社企的4成*。本會積極推動及支援社會企業的發展，擔當政府、商界、學術界、社福界與社企之間的溝通橋樑。

HKGCSE was established in 2009 as one of the important platforms of social enterprises. The number of our members accounts for 40% of social enterprises in Hong Kong*. HKGCSE actively promotes and supports the development of social enterprises, serves as a bridge between social enterprises and the government, business partners, academia and NGOs.

*根據香港社會服務聯會的《社企指南2019》，截止2018年底，全港社企數目為651間。

*According to HKCSS "SE Directory 2019", there are 651 social enterprises in Hong Kong until 2018.

使命Mission

G

Generates positive impact to the society

營造社會正向影響力

C

Creates opportunity for collaboration

促進社企與各界協作

S

Supports and advocates the development of SE

支援及倡導社企發展

E

Educates SE practitioners for better enhancement of efficiency

培訓社企及提升效益

願景Vision

本會致力促進香港社會企業的發展，成為香港社會企業具影響力的協作平台，團結社企及促進業界發展，締造一個進步共融的社會。

HKGCSE strives to foster the development of social enterprises in Hong Kong and become an influential platform that unites and facilitates social enterprises in Hong Kong for better enhancement of an inclusive society.

本會目標 Objectives



01

推動社會企業運動

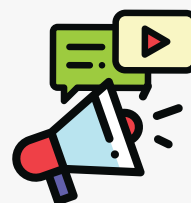
To promote social enterprise movement.



為社會企業發聲

To be the voice of social enterprise.

02



03

擔當社會企業與政府、商界、學術界及社福界的溝通橋樑

To act as the bridge between social enterprises and other sectors including government, corporates, academia and NGOs.



支援社企、提升其營運能力

To equip social enterprises with professional competencies.

04



05

增加大眾對社會企業的認識和支持

To broaden the public's understanding of social enterprises



會長的話 Chairman's message

時光荏苒，香港社會企業總會（社企總會）已成立十年。還記得當初與一群敬業樂業的社企人創立社企總會時，心中帶着一團熊熊烈火。這團火燃燒了十年，至今仍然旺盛。

我們一直以推動香港社會企業發展為目標，遇上挑戰仍迎難而上，成績有目共睹。




作為社企運動的推動者，社企總會多年來帶領業界及市民以社企認證計劃（SEE Mark）辨別、支持和發展社企。由2014年推展至今，雖然只有短短五年，已有近一百六十間社企獲得認證。在這個計劃下，社企須通過八大範疇的審核，有助它們改善不足之處以提升競爭力。即使香港現時沒有為社企制定相關法例和統一定義，我們大力推動社企認證計劃，確立社企的行業標準。

適逢社企總會成立十周年，我們在過去一年舉辦了更多活動，為業界提供支援。為慶祝社企總會成立十周年，我們舉辦了「十周年慶典暨社企研討會」，各界好友親臨見證本會的光輝時刻並共同探討社企的發展潛力。此外，我們又舉辦了「高效社企管理培訓課程」、「SE Tuesday」、「社企員工嘉許計劃」、「泰國社企交流之旅」等活動，以支援社企的發展。透過互相學習和交流，社企可提升營運效益，共同發揮影響力。同時，我們亦為有興趣發展社企的人士提供諮詢服務，加強社企和商界聯繫，促進雙方合作。

會員活動以外，社企總會亦非常關注與社企有關的議題和政策。除了聯絡平等機會委員會和李嘉誠基金會等組織爭取業界權益外，我們亦積極聯絡政府部門。鑑於現時的社會情況，本會以問卷調查及訪問的方式了解會員的營運狀況，並向政府建議支援業界的措施。我們積極與業界相關的司局級官員會面、對談，提出意見協助社企營運，為業界發聲及爭取更促進社企發展的措施和權益。

十年轉眼間過去，社企總會一直謹記以團結社企為初心，積極推動業界發展。沒有社企，就沒有社企總會。今後，我們必定繼續與社企同行，為業界寫下一個又一個精彩的十年。

郁德芬博士, BBS, JP
香港社會企業總會會長



HKGCSE has been established for 10 years already. I still remember when we founded HKGCSE with the social enterprise operators who are full of the spirit of “Jing Ye Le Ye” (敬業樂業) — dedication to and take delight in work, we all had really great passion. The fire in our hearts has been burning for ten years and it is still very strong. Our aim is to foster the development of social enterprises in Hong Kong. Although there are challenges, we try to do the best and the achievement is obvious.

As the facilitator of the social enterprise movement, HKGCSE has been leading the industry and citizens to recognize and support social enterprises by the SEE Mark Scheme. Although SEE Mark Scheme has been launching for 5 years only, there are already nearly 160 accredited social enterprises totally, since 2014. With this Scheme, social enterprises will go through the assessment of 8 aspects to improve the weakness and enhance the competitiveness. Despite the lack of regulation and definition for social enterprises, HKGCSE vigorously promotes SEE Mark Scheme and establishes the standards of the industry.

At the 10th anniversary of the establishment of HKGCSE, we organized more activities in the past year to provide support to the industry. To celebrate our 10th anniversary, we organized the “10th Anniversary Celebration and Social Enterprise Seminar”. Our friends witnessed our glorious moments and explored the potential of social enterprises together. Besides, we held “Capacity Building Scheme”, “SE Tuesday”, “Hong Kong Social Enterprise Employee Recognition Scheme”, “Social Enterprise Exchange Tour in Thailand” to support the development of social enterprises. Through mutual learning and communication, social enterprises could enhance their operational efficiency and exert their impact together. At the same time, we also provided consulting services, especially to the new social enterprises, as well as promote cooperation between business sectors and social enterprises.

Other than member activities, we concerned about topics related to social enterprises. We proactively contacted the government and also Equal Opportunities Commission and Li Ka Shing Foundation. In view of the current social situation, we sent questionnaire and interviewed our members to understand their operation. The suggestions of supporting measures were sent to the government. Also, we had meetings and dialogues with Principal Officials and Officials at the Rank of Director of Bureau to give advice and voice for the industry.

Over the past ten years, HKGCSE has always been committing to the mission to unite and actively promote the development of the industry. Without social enterprises, there would be no HKGCSE. In the future, we will continue to work with social enterprises to write more and more beautiful decades with the industry.

Dr YUK, Tak-fun, Alice, BBS, JP
Chairman of HKGCSE

組織架構 Organization Structure



會長
Chairman

郁德芬 博士, BBS, JP
Dr. YUK Tak-fun, Alice, BBS, JP



副會長
(外務)
Vice-Chairman
(External)

馬錦華 先生 MH, JP
Mr. MA Kam-wah, Timothy, MH, JP



副會長
(內務)
Vice-Chairman
(Internal)

姚鴻志 先生
MR. YIU Hung-chi



理事
Council
Member

趙立基 先生
Mr. CHIU, Lap-kee, Jimmy



理事
Council
Member

高碧姬 女士
Ms. KO Pik-kei, Peggy



理事
Council
Member

吳淑玲 女士
Ms. NG Suk-ling, Angel



理事
Council
Member

黃素娟 女士
Ms. WONG So-kuen, Kris



理事
Council
Member

葉永歡 女士
Ms. YIP Wing-foon, Foon



理事
Council
Member

沃馮嫵琮 女士
Ms. YUK Fung-yin-king, Helina



義務秘書
Hon. Secretary
鍾偉成 先生
Mr. CHUNG Wai-shing



義務秘書
Hon. Secretary
梁少玲 女士
Ms. LEUNG Siu-ling, Ivy



義務司庫
Hon. Treasurer
李玉芝 女士
Ms. LEE Yuk-chi, Josephine



理事
Council Member
吳宏增 先生
Mr. NG Wang-tsang, Andy



理事
Council Member
魏文富 先生
Mr. NGAI Man-fu, Simon



理事
Council Member
翁文智 女士
Ms. ONG Man-chi, Fanny

名譽顧問

Honorary Advisor

陳肖齡女士, BBS

Ms. CHAN Chiu-ling, Ophelia, BBS

吳秋全先生

Mr. NG Chau-chuen, Charles

溫麗友女士, BBS, JP

Ms. WAN Lai-yau, Deborah, BBS, JP

黃元山先生

Mr. WONG Yue-shan, Stephen

名譽法律顧問

Honorary Legal Advisor

許宗盛先生, SBS, MH, JP

Mr. HUI Chung-shing, Herman, SBS, MH, JP

活動回顧 Highlights

10周年慶典暨社企研討會

10th anniversary celebration ceremony cum SE symposium



適逢本會成立10周年，本會於2019年9月17日在油麻地城景國際舉行慶祝活動。當日，我們有幸邀請到行政會議非官守成員及基督教靈實協會行政總裁林正財醫生 SBS太平紳士擔任主禮嘉賓，與一眾理事、商業伙伴及社企好友共同見證本會成立10周年的光輝時刻。

我們亦頒發新一輪社企認證，以及舉辦社企研討會。是次研討會由本會理事吳宏增先生主持，並邀請到兩位年青的社企營運者馬啟仁先生（Keyman）及黃靜虹女士（Eva）為我們分享社企的發展潛力。

On the 10th anniversary of the establishment of HKGCSE, the celebration event was held on September 17, 2019 at the Cityview in Yau Ma Tei. It was our pleasure to invite the non-official members of the Executive Council and the CEO of the Haven of Hope Christian Service, Dr Lam Ching-choi, SBS, JP, as the officiating guest, to witness the glorious moment of our 10th anniversary with a group of council members, business partners and friends from the industry.

Simultaneously, a new round of SEE mark was awarded and the social enterprise seminar was held. The seminar was hosted by Mr. Andy Ng, our council member. Two young social enterprise operators, Mr. Keyman Ma and Ms. Eva Wong were invited to be our guests to share the developmental potential of social enterprises.

SEE 認真·認可 社企認證

Social Enterprise Endorsement Mark

「社企認證」是香港首個為社企而設的認證制度，是一套專業、客觀、全面性的評審系統。這系統旨在幫助社企認清不足之處，針對性地改善其營運能力，同時增加社企營運的透明度，加深大眾及潛在投資者對社企的認識和支持。截至2019年9月，累計159個社企項目已獲認證。

SEE Mark is the first accreditation system for social enterprises in Hong Kong, which is a professional, objective and comprehensive assessment system. It aims to uplift the social enterprises and improve the level of public confidence. Until September 2019, there were 159 cumulative accredited social enterprises.



社企發展及支援

Support for the development of SE

為促進社企的發展，本會舉辦了不同類型的活動，建立一個讓會員互相扶持的平台，支援會員所需。

In order to promote the development of social enterprises, HKGCSE organized different types of activities to establish a platform for members to support each other and support members' needs.

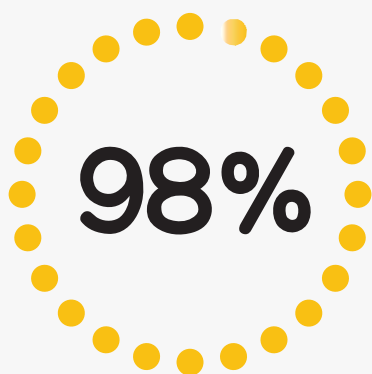
社企培訓工作坊Capacity Building Workshops

本會榮獲民政事務局贊助，舉辦工作訪和社企探訪等活動予業界及有興趣開立社企之人士，分享社企營運的知識和技巧。本會在2019年共籌辦了28場工作坊，以審核社企的八大範疇為核心。工作坊共吸引了約400位社企員工參加，獲參加者一致好評，認為課程有助提升社企的營運能力。另外，本會亦籌辦了社企探訪，讓參加者走入社企，認識社企的日常運作。

Thanks to Home Affairs Bureau, HKGCSE organized workshops and visits to social enterprises for the industry and those who are interested in setting up social enterprises to share the knowledge and skills. In 2019, we organized totally 28 workshops based on the eight assessment criteria of SEE Mark. The workshop attracted a total of about 400 social enterprise employees. The participants highly praised and believed that the course would help enhance the operational capabilities of social enterprises. In addition, HKGCSE organized visits to social enterprises to help participants understand the daily operations of the social enterprises.

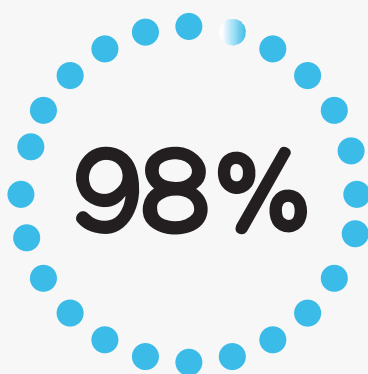


工作坊滿意度 Overall Satisfaction of the workshops



參加者同意工作坊
內容實用，並對他們有幫助。

Participants found the training useful and practical



參加者同意工作坊
有助推動社企界持續學習的文化。

Participants agreed the workshop fosters
a learning culture among SE sector



參加者同意「社企總會」
未來繼續舉辦更多有助
支援社企的工作坊及活動。

Participants agreed HKGCSE to organize
different workshops and activities to support SEs.

社企星期二 SE Tuesday



本會積極為會員提供交流平台，活動有不同的主題，例如：讀書會、分享會等，使參加者能夠從多角度認識社企，並於活動後與各方代表聯誼，促進跨界別合作。

HKGCSE actively provided members a platform for exchange. There were different themes in the activities, such as, reading clubs, sharing meetings, etc., so that participants could understand social enterprises from multiple perspectives. In order to promote the cross-sector cooperation, participants were given time to interact with each other after the activities.



香港社企員工嘉許計劃2019

Hong Kong Social Enterprise Employee Recognition Scheme 2019

計劃旨在表揚員工的優秀表現及肯定他們的貢獻，嘉許禮於2019年11月5日在尖沙嘴香港基督教青年會舉行，活動邀請到平等機會委員會主席朱敏健先生I.D.S.擔任主禮嘉賓。東華三院賽馬會復康中心「鼓躍飛鷹隊」為典禮作開幕表演，不同年齡和能力的隊員為我們帶來精彩演出，令典禮生色不少。

本年共有101位員工獲得嘉許，另有20位榮獲星展銀行（香港）有限公司贊助的優秀長期員工服務獎，每位獲選之員工可獲港幣\$2,000作嘉許。

The Scheme aimed at recognizing the outstanding performance of employees and affirming their contribution. The ceremony was held at the Hong Kong YMCA in Tsim Sha Tsui on November 5, 2019. We were glad to have Mr Ricky CHU Man-kin, I.D.S., Chairman of Equal Opportunities Commission, as the officiating guest. The drum team from TWGHs Jockey Club Rehabilitation Center opened the ceremony. Players of different ages and abilities brought us wonderful performances, which made the ceremony very exciting.

A total of 101 staff were commended this year. Another 20 staff were awarded DBS Long Service Award sponsored by DBS Bank (Hong Kong) Limited and each awardee was awarded HK\$2,000.



政策倡議

Policy Advocacy

本會積極回應政府的施政及政策，曾多次與政府主要官員進行會面，以及參與政策小組會議，並就政府的施政報告、財政預算及其他政策提出書面建議。因應近期的社會情況，本會亦就社企營運狀況進行問卷調查，收集會員意見後向政府及李嘉誠基金會提出建議。

HKGCSE proactively advocated social enterprise related issues in response to government policy. We met with key government officials on a number of occasions and participated in policy group meetings. We also submitted written proposals on the government's policy address, budget and other policies. In response to the recent social situation, HKGCSE also conducted a questionnaire survey on the operation status of social enterprises. After the collection of feedback, the suggestions were sent to the Government and Li Ka Shing Foundation.



教育及推廣

Education & Promotion

教育是傳承社會企業理念的重要工作，以培育新一代投身社企、共建美好社會。過去一年，本會積極透過不同渠道宣揚社企工作，讓年輕人更了解營運社企的意義。

Education is an important tool to spread the concept of social enterprise and bring long-term social change. It paves the way for youngsters to devote themselves into the industry and contribute to the community. HKGCSE promoted social enterprises and nurtured social entrepreneurs through different educational programmes.

培育社企人才 Nurturing Social Enterprise Talents

本會今年再與匯一諮詢有限公司（EDUA）合辦「香港街頭營銷賽」，提供社企探訪及評審工作。本會擔任比賽評審，超過300位內地學生組成不同的市場策劃團隊，

在48小時內掌握指定的社企背景和業務範圍，製作一個改良或創新的方案或產品。



HKGCSE jointly organized the "Hong Kong Street Marketing Competition" with EDUA to provide social enterprise visits and assessments. We were the judges in the competitions. Over 300 mainland students formed different marketing planning teams. They had to master the designated social enterprises' backgrounds and the business scope within 48 hours, and produced an improved or innovative solution or product.

本會亦夥拍香港樹仁大學舉辦實習生計劃，透過暑期實習，讓大學生深入了解社企的成立目的、營運及社會影響，培養創立社創項目的能力。

HKGCSE organized internship programme with Hong Kong Shue Yan University. Through internship, university students can enhance their understanding on the social mission, social impacts and the operation of social enterprises.



社企協作

Partnership

本會參與和協辦多項社企及社創項目，除促進本會與伙伴的關係外，更可凝聚社會力量及增加大眾對社企的認識。本會亦藉此推介會員予商界、學術界及社福界，推動社企發展。

HKGCSE co-organized a number of social enterprise and social innovation projects. It helped strengthen the relationship between the partners and us. The synergistic partnership certainly benefited social enterprises from gaining stakeholders' support. To promote the development of social enterprises, we also introduced HKGCSE members to corporates, academia, and NGO for exploring collaboration.

合辦大型社企活動 SE activities

- 社企民間高峰會 SE Summit
- 豐盛社企學會「十一良心消費運動2019」 FSES Tithe Ethical Consumption
- 社創SoIN-無障畫創大賽 Art Competition for Social Inclusion

會員活動

- 香港復康力量「在職達人選舉」 HKRP Life Driver Election 2018

大專院校

- 香港社會工作人員協會及香港大學：70周年國際研討會
HKU & The Hong Kong Social Workers Association: 70th Anniversary International Conference
- 香港理工大學賽馬會社會創新設計院「十萬分之一」社會創新研討會
PolyU Jockey Club Design Institute for Social Innovation One from Hundred Thousand" Social Innovation Symposium

社企比賽

- 香港中文大學創業研究中心「香港社會企業挑戰賽」
CUHK Center for Entrepreneurship: Hong Kong Social Enterprise Challenge



國內外交流聯繫

International Collaboration

本會積極與海外機構聯繫及合作，除了可推廣香港的社企外，亦可增加本地社會企業的發展機遇。社企透過交流與學習，為其業務注入新思維，使社企運動不斷邁步向前。

HKGCSE proactively connected with overseas organizations to promote social enterprises of Hong Kong, as well as to pursue new business opportunities. The exchange of ideas offered fresh insights into social enterprises leading up to the development of the sector.

社企交流考察團 Exchange & study tours

本會於2019年10月9日至13日率領13人代表團前往泰國曼谷與當地社企交流，深入走訪當地社區，了解多元文化、製作地道地食、體驗治療按摩等，從多個方面了解當地社企的營運模式。

另外，本會繼續參與在10月23日至25日於埃塞俄比亞舉辦的世界社企論壇2019，與世界各地的社創家交流。

From October 9 to 13, 2019, 13 participants joined the social enterprise exchange tour to Bangkok, Thailand to visit local communities. Participants got to learn about multiculturalism, make authentic food, and experience therapeutic massage, etc. It helped participants to understand the mode of operation of local social enterprises in multiple aspects.

In addition, HKGCSE continued to participate in the Social Enterprise World Forum 2019 held in Ethiopia from October 23 to 25, 2019 to exchange ideas with social entrepreneurs around the world.



「關愛桂城」項目 Guicheng Project

本會繼續與佛山市南海區桂城街道辦事處合作，開展「關愛基金」服務項目評估工作。本會組織專家，透過其專業知識，就項目進行審查、考察、督導等工作，以推動當地公共服務和提升社會管理效能，同時協助辦事處官員及社工安排到港探訪學習。

HKGCSE continued the cooperation with the Guicheng Sub-district Office of Nanhai District, Foshan City to carry out the evaluation of the “Caring Fund” service project. Our professional experts helped conduct review, inspection and supervision to promote local public service and enhance social management effectiveness. Simultaneously, we assisted officials and social workers to arrange visits to Hong Kong.

第七屆中國公益慈善專案交流展示會 Exhibition in Shenzhen

本會今年獲邀請參加展示會，並於2019年9月20至22日在深圳會展中心設展區宣傳香港社企推廣工作，與內地社會服務人士作交流。

HKGCSE was invited to participate in the exhibition in Shenzhen Convention and Exhibition Center on September 20-22, 2019 to communicate with mainland social service personnel.

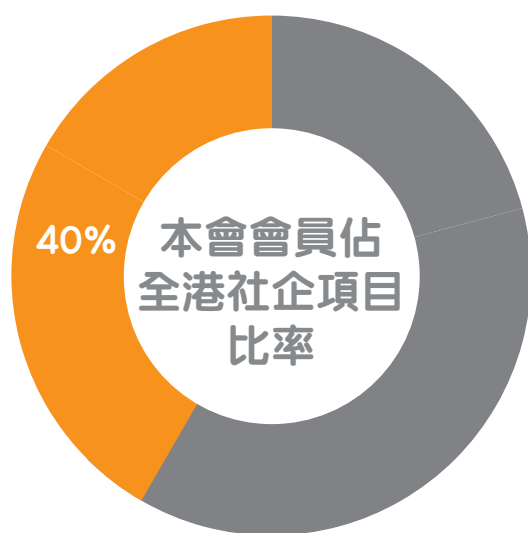


會員事務

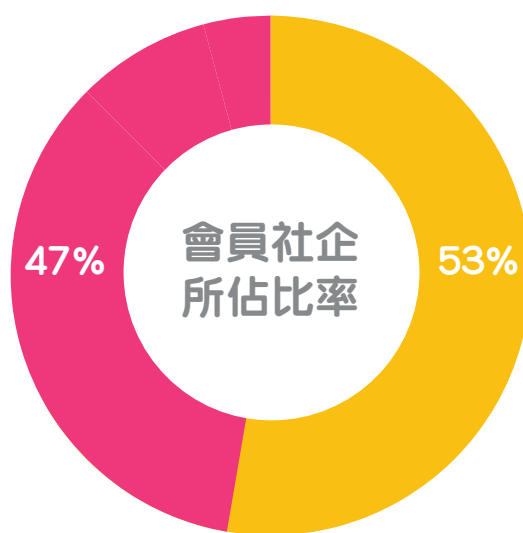
Membership's Affairs

本會積極連繫各會員，定期到他們的辦公室或店舖拜訪，了解他們的營運狀況、面對的挑戰和機遇。本會亦十分支持會員舉辦的活動，不時出席他們的周年會議、開幕禮等。

HKGCSE actively connected with our members by visiting their offices and attending their events. It helped us understand their operations, challenges and opportunities.



會員：76個
會員社企：274 個



私人資本成立社企
非牟利組織社企



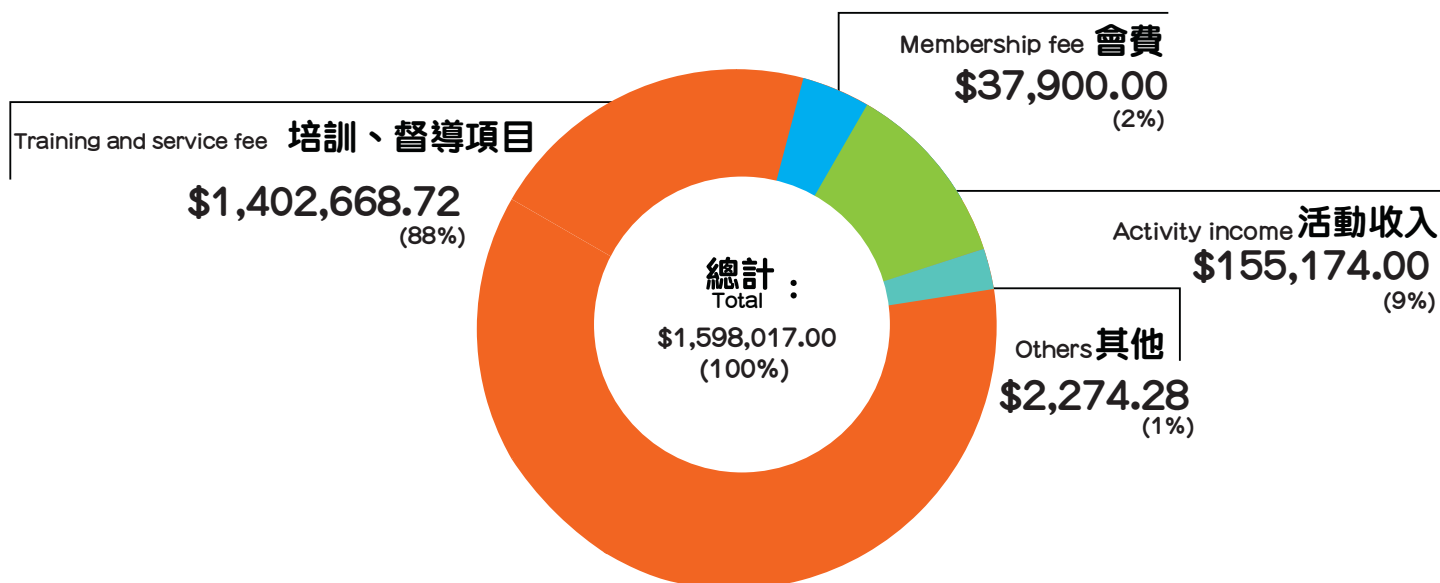
本會為會員定期提供一對一的「個別社企諮詢服務」。這計劃針對特定的社企行業，由該界別的資深營運者直接解答會員的問題或提出建議。本會亦定期出版會員通訊，提供社企業界最新活動的資料，其他會員服務包括：租用場地及廣告燈箱、通訊地址及收信服務、影印及傳真服務。

HKGCSE regularly provides one-on-one social enterprise consulting services for members. Senior operators in the sectors answer members' questions or provide suggestions to specific social enterprises. We also publishes newsletters on a regular basis to provide the latest information of the industry. Other member services include renting venues and advertising boxes, mailing address and receiving services, photocopying and fax services.

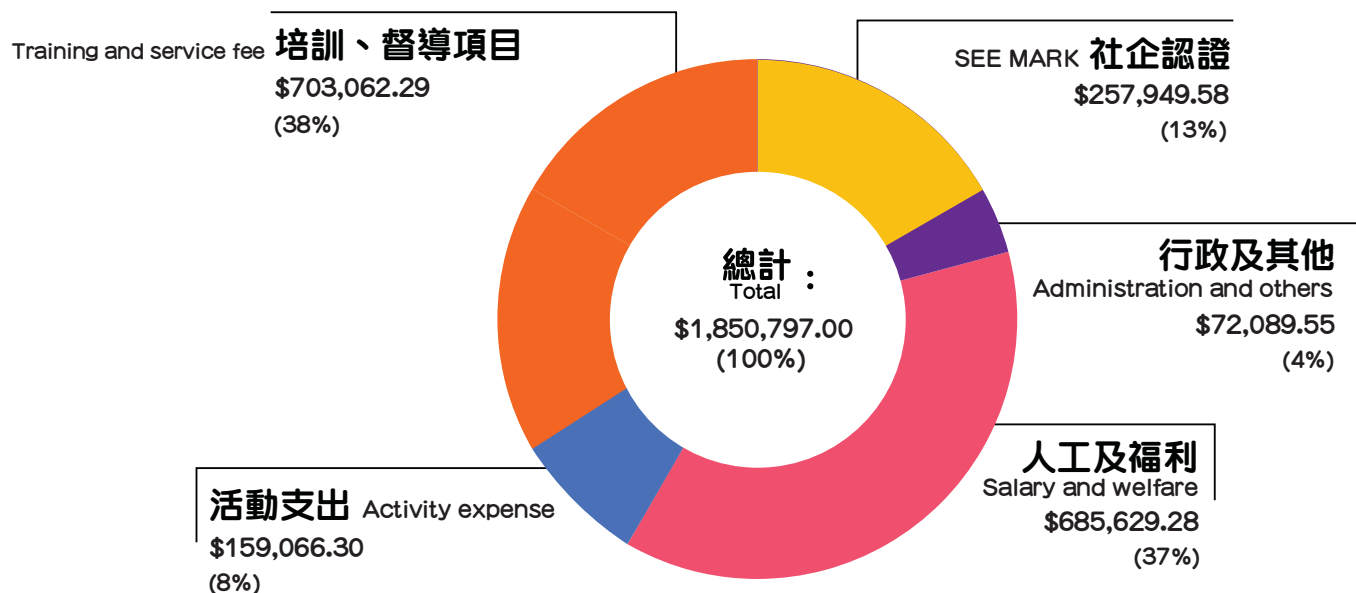


財務報告 Financial Statement

►收入 Income 2018/19



►支出 Expense 2018/19



以上財務報告及資料並非公司條例436條定義下的指明財務報表。本機構已按照公司條例662(3)條及附表6第3部提交該年度的周年財務表至公司註冊處。本機構之核數師已對該年度的財務報表發出報告。核數師報告為沒有保留意見的審計報告；其中不包含核數師在不出具保留意見的情況下以強調的方式促請使用者注意的任何事項，亦不包含根據公司條例第406(2)、407(2)或(3)條作出的陳述。

創會會員 Founding Members

鍾偉成先生

Mr. CHUNG Wai-shing

李玉芝女士

Ms. LEE Yuk-chi, Josephine

馬錦華先生, JP

Mr. MA Kam-wah, Timothy, JP

吳宏增先生

Mr. NG Wang-tsang, Andy

翁文智女士

Ms. ONG Man-chi, Fanny

蘇國安先生

Mr. SO Kwok-on, Christopher

楊建霞女士

Ms. YEUNG Kin-ha, Yvonne

姚鴻志先生

Mr. YIU Hung-chi

郁德芬博士, BBS, JP

Dr. YUK Tak-fun, Alice, BBS, JP



會員名單 Member List

基本會員 Full Member (2018-2019)

明朗服務有限公司	香港聖公會福利協會	北斗薈萃
基督教勵行會	活才社會企業有限公司	基督教聯合那打素社康服務
基督教家庭服務中心	香港基督教女青年會	東華三院
基督教豐盛職業訓練中心	香港失明人協進會	香港基督教青年會
香港職業發展服務處	香港神託會 — 力加服務有限公司	長者安居協會
香港復康力量	香港基督少年軍	聖雅各福群會
香港聖公會麥理浩夫人中心	香港唐氏綜合症協會	香港復康會
明途聯繫有限公司	保良局	香港盲人輔導會
新生精神康復會	仁濟醫院	匡智會社會企業部
利民卓業有限公司	扶康會-康融服務有限公司	浸信會愛羣社會服務處
南葵涌社會服務處	基督教信義會社會服務部	科普策略顧問有限公司
香港聖公會福利協會	和富社會企業	

*排名不分先後
*Not listed in order

會員名單

附屬會員 Associate Member (2018-2019)

愛同行	魚菜科學園有限公司	輕足適養生(集團)有限公司
互文教社	"沙螺洞綠田園有限公司 "	共融教室有限公司
歷耆者有限公司	寶護理整全綜合服務中心	動力天使社會企業有限公司
樂在棋中社會企業有限公司	AMYC AND COMPANY	家務幫
竹園區神召會	心繫心生命輔導及教育服務有限公司	瑜樂伽教室有限公司
香港老年學會	皇家牛劍學院(香港)有限公司	裳樂匯坊
家點綠	微型森林	社企苗
籽識教育顧問有限公司	天糧行膳	陽光老友記
陸續出版有限公司	體育係	香港醫護聯盟
The Project Futurus	有機農作業	思拔中心有限公司
循道衛理中心	G4One Social Enterprise Limited	The Fruition Limited
V Cylce Company Limited	滾動的書	簡約吞嚙餐有限公司
啟德航空教育有限公司	我們(第一)製作有限公司	

*排名不分先後
*Not listed in order

鳴謝 Acknowledgement

本會感謝以下單位在過去一年的支持：

香港特別行政區政府民政事務局
香港特別行政區政府勞工及福利局
旭日集團
星展銀行(香港)有限公司
香港寬頻網絡有限公司
團結香港基金
心光盲人院暨學校
香港職業發展服務處
馬錦華專業管理培訓公司
聖雅各福群會
明途聯繫有限公司
基督教家庭服務中心
基督教豐盛職業訓練有限公司
東華三院
明朗服務有限公司
香港基督少年軍
香港基督教女青年會
香港聖公會麥理浩夫人中心
香港失明人協進會
香港復康力量
新生精神康復會
魅力薈萃有限公司
北斗薈萃
群力社企有限公司
豐盛社企學會
長者安居協會
香港01有限公司
經濟通ET Net - 社創SoIN
星島日報
明報



中國公益慈善項目交流展示會

DoiTung

SE Thailand

林正財醫生, SBS, JP

朱敏健先生, I.D.S.

許宗盛先生, SBS, MH, JP

吳秋全先生

賴錦璋先生, BBS, MH, JP

黃傑龍先生, JP

區玉輝教授

朱靜華博士

蔡振榮博士

汪耀誠先生

簡佩霞女士

黃元山先生

藍秋琴女士





聯絡我們 Contact Us

☎ +852 3616 6951

✉ info@sechamber.hk

🏠 sechamber.hk

 [香港社會企業總會](https://www.facebook.com/sechamber)  [hksechamber](https://www.facebook.com/hksechamber)

香港九龍觀塘鴻圖道16號志成工業大廈12樓1205室

Rm1205, 12/F, Houtex Industrial Building, 16 Hung To Road, Kwun Tong, Kowloon